

SUMAC CAPACITY

SQ(M) DINING ROOM: 255
 SQ(M) OUTDOOR: 110

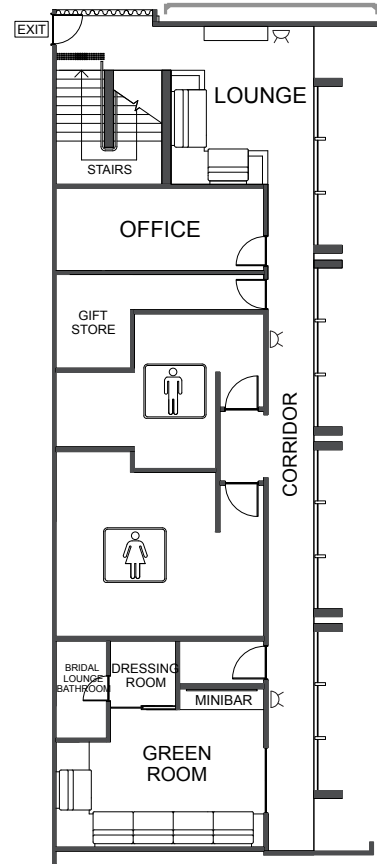
THEATRE: 230
 CLASSROOM: 100
 COCKTAIL: 380
 COCKTAIL OUTDOOR: 180

BANQUET
 TABLES OF 10 PAX: 150
 TABLES OF 12 PAX: 180

DINNER DANCE
 TABLES OF 10 PAX: 120
 TABLES OF 12 PAX: 144

LEGEND

- ⌘ Double power point (10 amp)
- ⌘ Single power point (15 amp)
- ⊕ 3 Phase power outlet (32 amp)
- Ⓜ Data point
- Ⓜ Microphone Input
- Ⓜ Rigging point (ceiling hatch)
- ♂ Male Toilet
- ♀ Female Toilet
- ♿ Disabled Toilet



MEZZANINE LEVEL

